



ASKING PRICE

£600,000

Addison Road

, BR2 9RP

PROPERTY SUMMARY

Sinclair Hammelton are proud to bring to the market this charming Victorian terrace house situated in the ever popular Chatterton Village. The property is conveniently located being close to local transport links, under a mile to both Bickley and Bromley South Station and 0.1 mile to the sort after Raglan Primary School. Living accommodation comprises an entrance hallway, lounge with opening to dining room both with feature fireplaces and built in storage, W/C and kitchen with French doors leading to a private mature garden. To the first floor there are three good size bedrooms with family bathroom. There is potential to extend if required (STPP). Viewing highly recommended.

EPC: D
Freehold
COUNCIL TAX - D
Construction - Traditional
Mains Services - Gas, Electricity, Sewerage, metered water supply
Heating System - Gas radiators
Broadband - Virgin Media
Mobile coverage - EE
Restrictive covenants - No

3



1



1



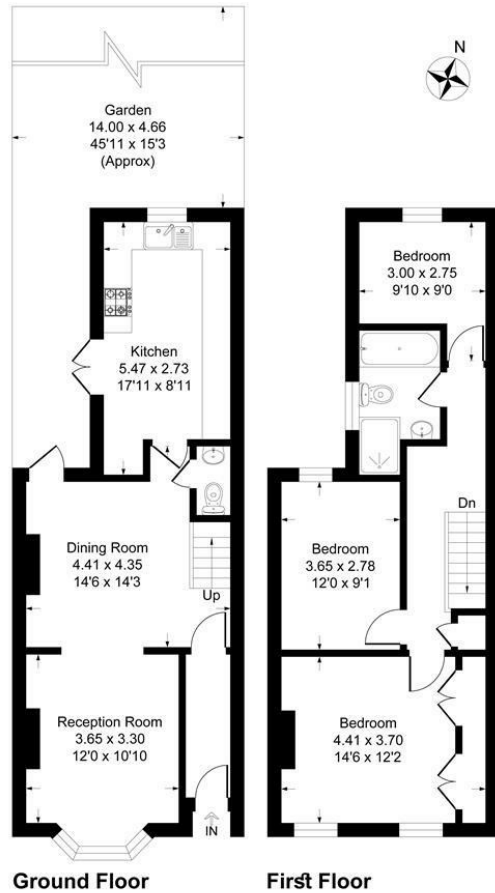






Addison Road, BR2

Approximate Gross Internal Area 96.6 sq m / 1041 sq ft



This plan is for layout guidance only. Not drawn to scale unless stated. Windows and door openings are approximate. Whilst every care is taken in the preparation of this plan, please check all dimensions, shapes and compass bearings before making any decisions reliant upon them.
Produced By Planpix

LOCAL AUTHORITY

TENURE
Freehold

EPC RATING:
D

COUNCIL TAX BAND
D

VIEWINGS
By prior appointment only

Energy Efficiency Rating		Current	Potential
Very energy efficient - lower running costs			
(92 plus) A			
(81-91) B			
(69-80) C			78
(55-68) D		64	
(39-54) E			
(21-38) F			
(1-20) G			
Not energy efficient - higher running costs			
England & Wales		EU Directive 2002/91/EC	

Agents Note: Whilst every care has been taken to prepare these particulars, they are for guidance purposes only. All measurements are approximate and are for general guidance purposes only and whilst every care has been taken to ensure their accuracy, they should not be relied upon and potential buyers/tenants are advised to recheck the measurements

Sinclair  Hammelton

OFFICE ADDRESS

23 High Street
Bromley
Kent
BR1 1LG

OFFICE DETAILS

0208 464 5566
info@sinclairhammelton.co.uk